

# Color Fish Finder Cable Transducer Mode Operations Manual



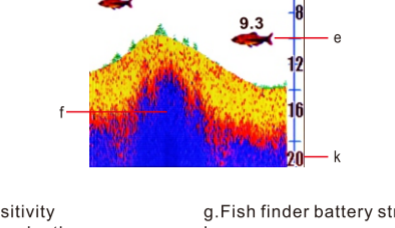
WWW.LUCKYSONAR.COM

## FL168LiC-T Color Fish Finder Cable Transducer Mode Operations Manual

Thank you for choosing **LUCKY** FL168LiC-T Color Cable Transducer fish finder.

This amazing product is suitable for both angler and fishermen, to help you master the fish location, depth, and bottom contour underwater. The unit can be used in ocean, river or lake which is fantastic for detecting fish schools in any fishing spots. This fish finder is your ideal fishing mate!

The FL168LiC-T has Two user-modes: TRANSDUCER and WIRELESS. Changing between these TWO user-modes by pressing the MENU button.



**Cable transducer** : This user mode allows you to use the transducer at 200KHz frequency. When you choose cable transducer mode, the FL168LiC-T can indicate fish found in the 45° wide beam when the fish icon mode is turned on.

**Wireless**: This user mode allows you to use the FL168LiC-T in wireless frequency. When use wireless mode, this fish finder can indicate fish found in the 90° wide beam when the fish icon mode is turned on.



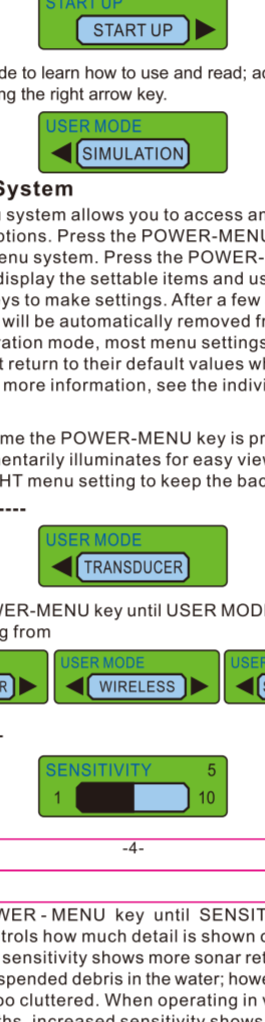
-1-

## 2. How FL168LiC-T Cable Transducer works

The FL168LiC-T is the easiest to use fish finder for most anglers, all you need to do is turn on the device and fish! The FL168LiC-T automatically detects depth and adjusts to keep the bottom contour and fish visible on the display. The FL168LiC-T uses sonar technology to send sound waves from the transducer into the water. The "echo" reflects once the sound wave hitting the object then appears on the display, creating a very accurate underwater picture, including distance from underwater objects such as the bottom, fish and structure. When used as a portable cable sonar, FL168LiC-T works at 200KHz frequency, sonar detection coverage as 45° cone. When you use cable transducer mode, the FL168LiC-T can display fish which swim in the 45° wide range. Ship speed, wave action, bottom hardness, water conditions and sensor installation all affect depth capability.

**Display View**  
The FL168LiC-T displays underwater information in an easy-to-understand format. The top of the display corresponds to the water surface at the transducer, and the bottom of the display corresponds to the Depth Range automatically selected for the current water depth. The bottom contour varies as the depth under the boat changes. Digital readouts provide precise information for depth, fish and water temperature.

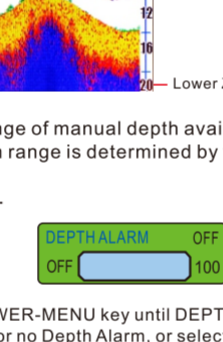
The display will show changes in terrain and bottom composition as the ship moves. Fish, bait fish and thermocline (underwater temperature changes). Underwater conditions vary widely, so if you want to fully understand the benefits of FL168LiC-T you need some experience and interpretation. Use picture as a guide in most common conditions and use FL168LiC-T to explore unknown underwater types.



- a. Sensitivity
- b. Water depth
- c. Water temperature
- d. Water Surface
- e. Large fish icon with depth
- f. Bottom contour
- g. Fish finder battery strength
- h. upper zoom range
- i. Small fish icon with depth
- j. Middle fish icon with depth
- k. Lower zoom range

## Power ON and OFF

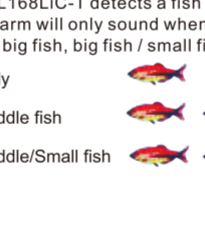
Press and release the POWER-MENU key to turn the FL168LiC-T on. Press and hold the POWER-MENU key until the unit shuts down and power off.



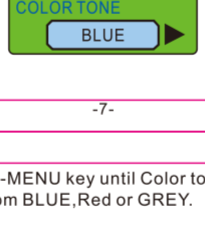
When the FL168LiC-T powers on, the **LUCKY** logo will temporarily display on screen last for 5seconds. Then will show **START UP**. From this menu, use the arrow keys to select either Start-Up, Simulation. If you do nothing, the unit will default to normal on the water use.

-3-

- Use Start-Up for the water use.



- Use demo mode to learn how to use and read; access the demo mode by pressing the right arrow key.

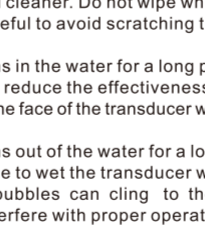


## The Menu System

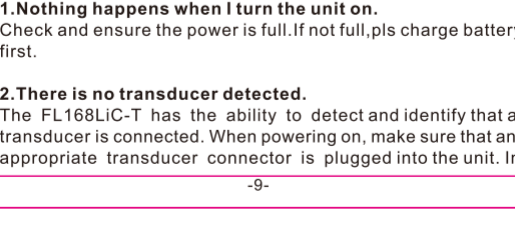
A simple menu system allows you to access and set up the FL168LiC-T options. Press the POWER-MENU button to activate the menu system. Press the POWER-MENU button repeatedly to display the settable items and use the up and down arrow keys to make settings. After a few seconds, the menu settings will be automatically removed from the screen. In normal operation mode, most menu settings saved to memory do not return to their default values when the unit is turned off. For more information, see the individual menu options.

**NOTE:** Each time the POWER-MENU key is pressed, the backlight momentarily illuminates for easy viewing at night. Adjust the LIGHT menu setting to keep the backlight on.

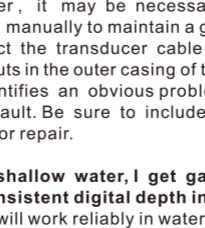
## User mode-----



Press the POWER-MENU key until USER MODE menu appears. Select a setting from

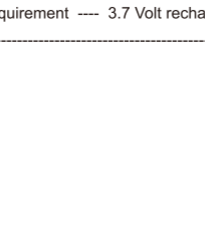


## Sensitivity—



Press the POWER - MENU key until SENSITIVITY appears. Sensitivity controls how much detail is shown on the display. Increasing the sensitivity shows more sonar returns from small baitfish and suspended debris in the water; however, the display may become too cluttered. When operating in very clear water or greater depths, increased sensitivity shows weaker returns that may be of interest. Decreasing the sensitivity eliminates the clutter from the display that is sometimes present in murky or muddy water. If Sensitivity is adjusted too low, the display may not show many sonar returns that could be fish. (1 –10).

## Depth Range---



Press the POWER-MENU key until DEPTH RANGE appears. Automatic is the default setting. When in automatic working mode, the depth range will be adjusted by the unit to follow the bottom. (Auto, 1 to 100 Meter)

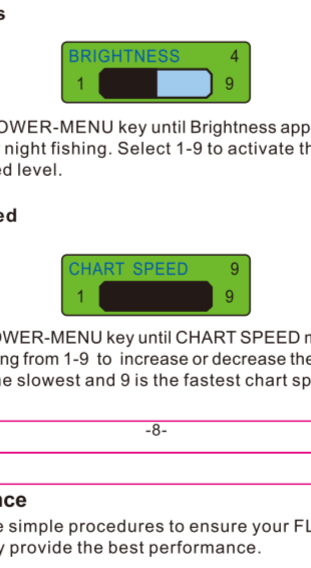
**NOTE:** In manual operation, if the current depth is greater than the depth range settings, the bottom will not be visible on the display. Select AUTO to return to automatic operation.

## ZOOM—



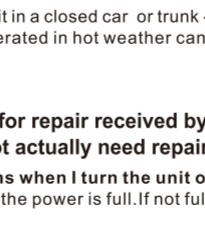
Press the POWER-MENU key until ZOOM appears. Select Auto to magnify the area around the bottom in order to be visible during normal operation. When ZOOM is set to Auto, the upper and lower Depth Ranges are automatically adjusted to keep the area above and below the bottom of the display. Select Off to return to normal operation. (Off, 1 to 100 Meter)

-5-



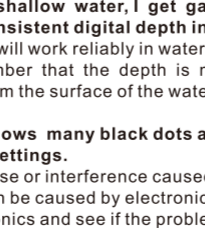
There is a range of manual depth available for selection. Manual depth range is determined by the current depth.

## Depth Alarm –



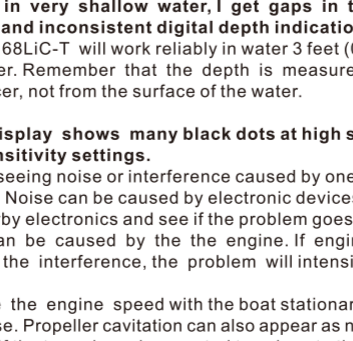
Press the POWER-MENU key until DEPTH ALARM appears. Select OFF for no Depth alarm, or select 1 to 100 Meter to set the alarm depth. An audible alarm sounds when the depth is equal to or less than the setting. (Off, Off 1 to 100 Meter)

## Fish Icon

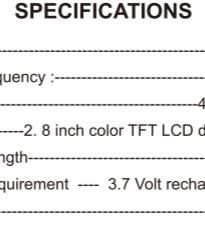


Make sure press the POWER-MENU key until FISH ICON appears. Select either Off to view the arches as the original sonar reflected signals or On to view the fish icons. Fish icons use advanced signal processing to interpret sonar reflected signals. The fish icon displayed on the screen also tells you what depth the fish is.

-6-



## Fish Alarm—



Press the POWER-MENU button until FISH ALARM appears. Selecting OFF means you don't need a fish alarm, or choose the corresponding symbol as below to set a fish alert. An alarm is issued when the FL168LiC-T detects a fish corresponding to the setting. Fish alarm will only sound when Fish ID + is also set to On. (closed, big fish, big fish / small fish).

- Large fish only
- Large fish/Middle fish
- Large fish/Middle/Small fish

## Units



Be sure to press the POWER-MENU key until UNITS appears. UNITS can choose depth units to display as feet or meters and temperature units as °F or °C.

## Color tone



Press the POWER-MENU key until Color tone menu appears. Select a setting from BLUE, Red or GREY.

## Battery alarm



Press the POWER-MENU key until Battery alarm menu appears. Select a setting from OFF or from 3.6V-4.2V. Battery alarm sounds when the input battery voltage is equal to or less than the menu setting.

## Language—



Press the POWER-MENU key until LANGUAGE appears. The FL168LiC-T fish finder has multiple language selection.

## Brightness



Press the POWER-MENU key until Brightness appears. Use the backlight for night fishing. Select 1-9 to activate the backlight at the desired level.

## Chart Speed



Press the POWER-MENU key until CHART SPEED menu appears. Select a setting from 1-9 to increase or decrease the chart speed, where 1 is the slowest and 9 is the fastest chart speed. (1 to 9)

-8-

## Maintenance

Follow these simple procedures to ensure your FL168LiC-T continuously provide the best performance.

If the unit comes into contact with salt spray, wipe the affected surfaces with a cloth dampened in fresh water.

Do not use a chemical glass cleaner on the lens - this may cause cracking in the lens.

When cleaning the LCD protective lens, use a chamois and a non-abrasive, mild cleaner. Do not wipe while dirt or grease is on the lens. Be careful to avoid scratching the lens.

If your boat remains in the water for a long period of time, marine growth can reduce the effectiveness of the transducer. Periodically clean the face of the transducer with liquid detergent.

If your boat remains out of the water for a long period of time, it may take some time to wet the transducer when returned to the water. Small air bubbles can cling to the surface of the transducer and interfere with proper operation. These bubbles dissipate with time, or you can wipe the face of the transducer with your fingers after the transducer is in the water.

Never leave the unit in a closed car or trunk - the extremely high temperatures generated in hot weather can damage the electronics.

## Trouble

**Many requests for repair received by LUCKY involve units that do not actually need repair.**

**1. Nothing happens when I turn the unit on.**  
Check and ensure the power is full. If not full, pls charge battery first.

**2. There is no transducer detected.**  
The FL168LiC-T has the ability to detect and identify that a transducer is connected. When powering on, make sure that an appropriate transducer connector is plugged into the unit. In

-9-

addition, inspect the transducer cable from end to end for breaks, kinks, or cuts in the outer casing of the cable. Also make sure that the transducer is fully submerged in water. If the transducer is connected to the unit through a switch, temporarily connect it directly to the unit and try again. If none of these action identifies an obvious problem, the transducer itself is probably at fault. Be sure to include the transducer if returning the unit for repair.

**3. There is no bottom reading visible on the display.**  
In very deep water, it may be necessary to increase the sensitivity setting manually to maintain a graphic depiction of the bottom. Inspect the transducer cable from end to end for breaks, kinks, or cuts in the outer casing of the cable. If none of these actions identifies an obvious problem, the transducer itself may be at fault. Be sure to include the transducer if returning the unit for repair.

**4. When in very shallow water, I get gaps in the bottom reading and inconsistent digital depth indication.**  
The FL168LiC-T will work reliably in water 3 feet (0.9 meters) or deeper. Remember that the depth is measured from the transducer, not from the surface of the water.

**5. The display shows many black dots at high speeds and high sensitivity settings.**  
You are seeing noise or interference caused by one of several sources. Noise can be caused by electronic devices. Turn off any nearby electronics and see if the problem goes away. Noise can be caused by the engine. If engine noise is causing the interference, the problem will intensify at higher RPMs.

Increase the engine speed with the boat stationary to isolate this cause. Propeller cavitation can also appear as noise on the display. If the transducer is mounted too close to the propeller, the turbulence generated can interfere with the sonar signal. Make sure that the transducer is mounted at least 15" (380mm) from the propeller.

-10-

## SPECIFICATIONS

- Depth Capability:-----328 feet (100m)
- Sonar Operating Frequency :-----200KHz
- Sonar Coverage: -----45 degrees in -----200KHz
- Display Type:-----2. 8 inch color TFT LCD display,240\*(RGB)\*320
- Transducer Cable Length-----20 ft (6m)
- Fish finder Power Requirement ---- 3.7 Volt rechargeable lithium battery
- Running time-----20 hours

-11-